



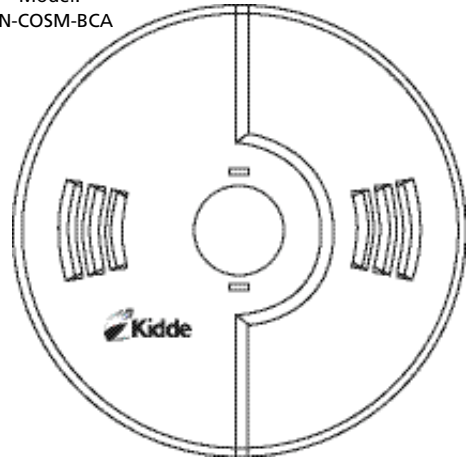
Battery Operated
COMBINATION SMOKE &
CARBON MONOXIDE ALARM
 With 2-LED Display, HUSH® and Peak Level Memory
User's Guide

For your convenience, write down the following information. If you call our consumer hotline, these are the first questions you will be asked:

Alarm Model Number (located on back of alarm):
Date of Manufacture (located on the back of the alarm):
Date of Purchase:
Where Purchased:

Model:

KN-COSM-BCA



Manual P/N 810-1333 Rev. C

For questions concerning your
 Combination Smoke and Carbon Monoxide Alarm,
 please call our Consumer Hotline at
 1-800-880-6788



Pyrene Corporation (a Kidde Company)
 130 Esna Park Drive, Markham, ON L3R 1E3
 Consumer Hotline: 1-800-880-6788
 www.kidde.ca

Custom Assembled in China with U.S. and Foreign Components.
 U.S. Patents 6,160,487, 6,522,248 and 6,753,786.



SINGLE STATION SMOKE ALARM
 AND CARBON MONOXIDE ALARM

SINGLE STATION CARBON MONOXIDE ALARM

Table of Contents

Introduction	1
Illustrations	2-3
Features	4-8
Installation	9-14
Operation	15-17
Alarm Removal	17
Alarm Replacement	17
Battery Replacement	18
Maintenance	19
Carbon Monoxide Safety	20-23
Fire Safety	24-26
Warranty	27-29

Introduction

Thank you for purchasing the Kidde Combination Smoke and Carbon Monoxide Alarm Model # **KN-COSM-BCA**.

This alarm has a five-year limited warranty.

Please take a few minutes to thoroughly read this user's guide, and save for future reference. Teach children how to respond to the alarms, and that they should never play with the unit.

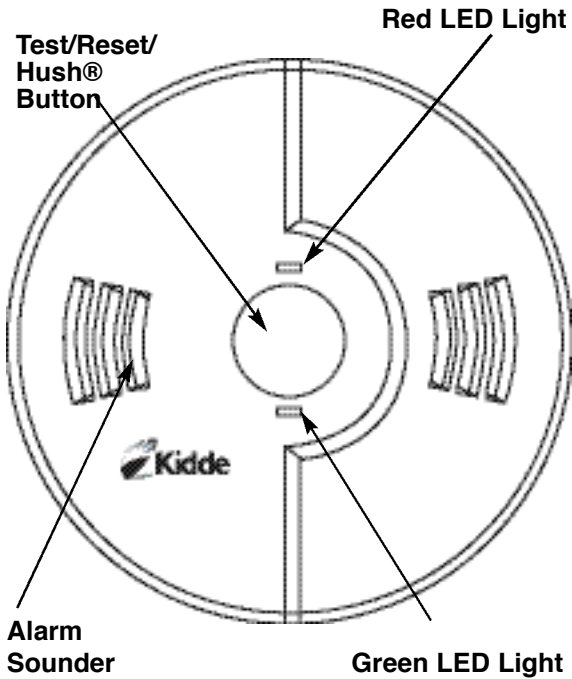
Your Kidde Smoke/CO Alarm was designed to detect both smoke and carbon monoxide from any source of combustion in a residential environment. It is not designed for use in a recreational vehicle (RV) or boat.

If you have any questions about the operation or installation of your alarm, please call our toll free Consumer Hotline at 1-800-880-6788.

The guide on page 25 will help you determine the correct location of safety products that will help keep your home a safer place.

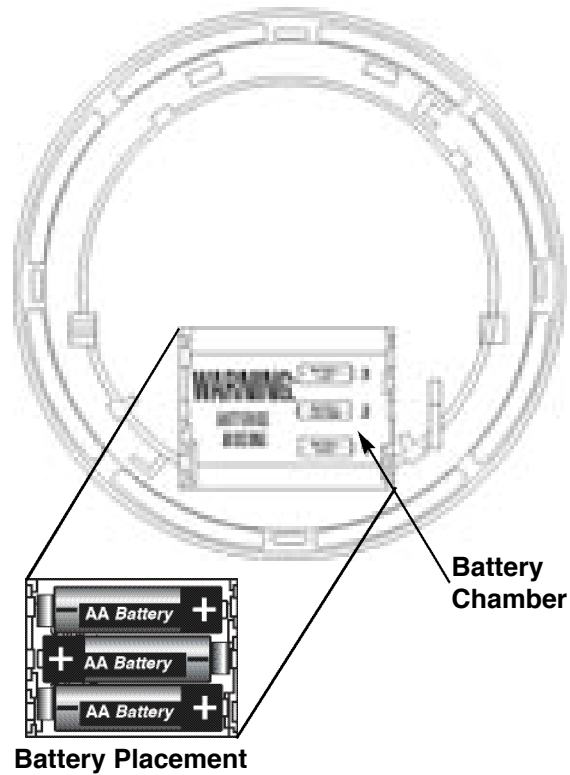
Illustration

FRONT



Illustration

BACK



Features

- Permanent independent smoke and carbon monoxide sensors (ionization and electrochemical).
- Loud 85 decibel alarm.
- Alarm/Voice message warning system that specifies which dangerous condition exists, eliminating any confusion over which alarm is sounding:

FIRE: The alarm/voice pattern is 8 seconds of alarm beeps followed by the verbal warning message, *"Fire! Feu!"* This pattern is repeated until the smoke is eliminated. The red LED light will flash while in alarm/voice mode.

CARBON MONOXIDE: The alarm/voice pattern is four short alarm beeps followed by the verbal warning message, *"Carbon Monoxide! Monoxyde de Carbone!"* This continues until the unit is reset or the CO eliminated. After four minutes the alarm/voice pattern will sound once every minute. The red Light Emitting Diode (LED) light will flash while in alarm/voice mode.

LOW BATTERY: When the batteries are low and need replacing the red LED light will flash and the unit will "chirp" one time, followed by the warning message, *"Low Battery. Pile Faible!"* This cycle will occur once every minute for the first hour. After the first hour the red LED light will continue to flash every minute accompanied by the "chirp" only sound. The voice message *"Low Battery. Pile Faible!"* will sound once every fifteen minutes during the "chirp" only cycle. This will continue for at least seven days.

- One "chirp" every 30 seconds is an indication that the alarm is malfunctioning. If this occurs call the Consumer Hotline at 1-800-880-6788.

NOTE: After seven (7) years of cumulative power up, this unit will "chirp" every 30 seconds. This is an "operational end of life" feature which will indicate that it is time to replace the alarm.

Features

- Oversized test button for easy activation.
- Test button performs the following functions:
 - Tests the units electronics and verifies proper unit operation
 - Resets the unit during CO alarm
 - Activates HUSH® Feature (see Page 16).
 - Peak Level Memory (See Page 17).
- Mounting bracket designed for easy orientation of unit.
- Green and red LED lights that indicate normal operation and alarm status.

Green Light: The green Light Emitting Diode (LED) flashes every 30 seconds to indicate the unit is operating properly, and once every 2 seconds to indicate the unit is in HUSH® mode. The green light also flashes before a CO reading is taken and when any button is pressed.

Red Light: When a dangerous level of smoke or carbon monoxide is detected the red Light Emitting Diode (LED) will flash and the corresponding alarm pattern (depending on the source) will sound. If the unit malfunctions, the red LED light will flash and the unit will chirp every 30 seconds indicating a system problem.

- Powered by three (3) AA batteries.
- Battery lockout system that prohibits installation without using three batteries.
- Smoke alarm takes precedence when both smoke and carbon monoxide are present.

TAMPER RESIST FEATURE

FIGURE 1A

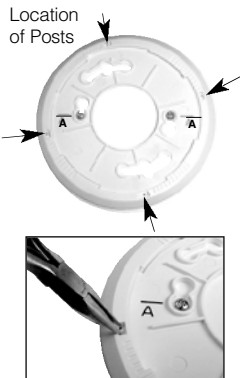
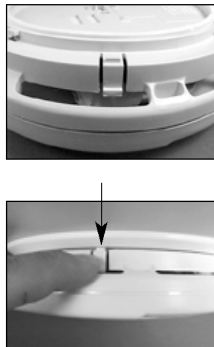


FIGURE 1B



Tamper Resist Feature

To make the Smoke/CO alarm tamper resistant, a tamper resist feature has been provided. Activate the tamper resist feature by breaking off the four posts in the square holes in the mounting plate (see Figure 1A). Rotate the alarm onto the mounting plate until you hear the tamper resist tab snap into place, locking the alarm.

Using the tamper resist feature will help deter children and others from removing the alarm. To remove the alarm, press on the tamper resist tab, and rotate the alarm off of the mounting plate (see Figure 1B).

Smoke Alarm

The smoke alarm constantly monitors the air for products of combustion that are produced when something is burning or smoldering. When smoke particles in the smoke sensor reach a specified concentration, the alarm/voice message warning system will sound, accompanied by the flashing red LED light.

NOTE: The smoke alarm takes precedence when both smoke and carbon monoxide are present.

This unit has a smoke sensor that uses the ionization technology

Smoke alarms are devices that can provide early warning of possible fires at a reasonable cost, however, alarms have sensing limitations.

Ionization sensing alarms may detect invisible fire particles (associated with fast flaming fires) sooner than photoelectric alarms.

Photoelectric sensing alarms may detect visible fire particles (associated with slow smoldering fires) sooner than ionization alarms.

Home fires develop in different ways and are often unpredictable. For maximum protection, Kidde recommends both ionization and photoelectric smoke alarms be installed.

CAUTION: Smoke must reach the sensor to be detected. Smoke alarms may not sense fires starting in chimneys, walls, on roofs, on the other side of a closed door, or on a different floor. The alarm may be unable to wake a sound sleeper, or someone impaired by alcohol or drugs.

Features

Carbon Monoxide (CO) Alarm

The carbon monoxide (CO) alarm constantly monitors the air for the presence of CO. It will alarm when there are high levels of CO present, and when there are low levels of CO present over a longer period of time (see Page 20 for alarm times). When a CO condition matches either of these situations, the alarm/voice message warning system will sound, accompanied by the flashing red LED light.

The carbon monoxide sensor uses an electrochemical technology.

CAUTION: This alarm will only indicate the presence of carbon monoxide gas at the sensor. Carbon monoxide gas may be present in other areas.

This device is designed to protect individuals from the acute effects of carbon monoxide exposure. It will not fully safeguard individuals with specific medical conditions. If in doubt consult a medical practitioner.

Installation of the device should not be used as a substitute for proper installation, use, and maintenance of fuel-burning appliances, including appropriate ventilation and exhaust systems.

Individuals with medical problems may consider using warning devices which provide audible and visual signals for carbon monoxide concentrations under 30 ppm.

Never ignore the sound of an alarm!

Determining what type of alarm has sounded is easy with the Combination Smoke/CO Alarm. The voice message warning system will inform you of the type of hazard occurring.

Installation

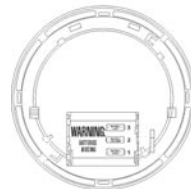
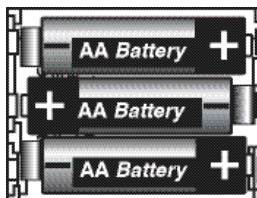
Installing Batteries

Batteries were not installed at the factory and must be installed for the unit to operate! Install the three (3) AA batteries in the back of the Smoke/CO Alarm.

- The mounting plate must be removed from the back of the alarm to install batteries. To detach, twist the mounting plate and the alarm in opposite directions.

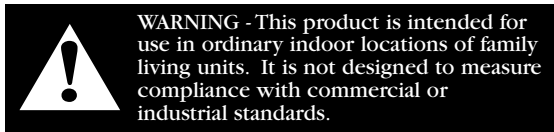
Batteries Must Be Installed in Order Shown Below:

3. Install Last
2. Install Second
1. Install First



- The battery polarity markings on the bottom of the battery compartment must be adhered to.
- Batteries must be installed in the sequence shown. If batteries seem difficult to install, they're not being installed in the proper sequence.
- Smoke/CO Alarm will not engage to bracket unless all three batteries are installed. Removal of any or all batteries will render the Smoke/CO Alarm inoperative!
- After the batteries are correctly installed the unit will beep once and the red LED light will flash. After 20-30 seconds the green LED light will flash indicating the unit is now operational.

Installation



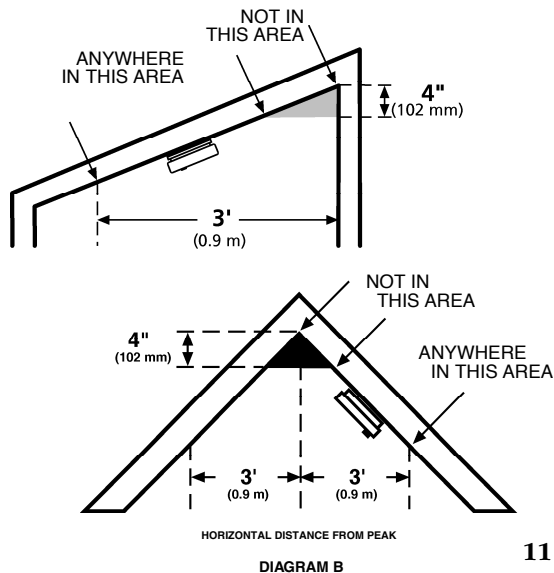
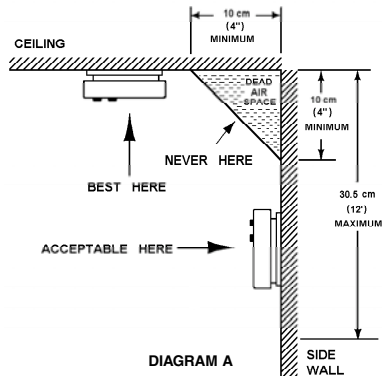
IMPORTANT: This alarm must be mounted on a ceiling or wall. It was not designed for use as a tabletop device. Install only as directed.

Kidde recommends the installation of a Smoke/CO Alarm in the following locations. For maximum protection we suggest an alarm be installed on each level of a multilevel home, every bedroom, hallways, finished attics and basements. Put alarms at both ends of bedroom, hallway or large room if it is more than 30'. (9.1m) long. If you have only one alarm, ensure it is placed in the hallway outside of the main sleeping area, or in the main bedroom. Verify the alarm can be heard in all sleeping areas.

Locate an alarm in every room where someone sleeps with the door closed. The closed door may prevent an alarm located outside that room from waking the sleeper. Smoke, heat and combustion products rise to the ceiling and spread horizontally. Mounting the alarm on the ceiling in the center of the room places it closest to all points in the room.

Ceiling mounting is preferred in ordinary residential construction. When mounting an alarm on the ceiling, locate it at a minimum of 4" (10cm) from the side wall (see Diagram A). If installing the alarm on the wall, use an inside wall with the top edge of the alarm at a minimum of 4" (10cm) and a maximum of 12" (30.5cm) below the ceiling (see Diagram A).

Installation



Installation

Sloped Ceilings

The following information is from the National Fire Protection Association and is listed in Fire Code 72. Install Smoke Alarms on sloped, peaked or cathedral ceilings at, or within 3' (0.9m) of the highest point (measured horizontally). Smoke alarms in rooms with ceiling slopes greater than 1' to 8' (0.3m - 2.4 m) horizontally should be located on the high side of the room. Do not place the alarm on the peak of an "A" frame type ceiling (see Diagram B)

Mobile Homes

Modern mobile homes have been designed and built to be energy efficient. Install Smoke/CO alarms as recommended above. (Refer to Recommended Installation Instructions and Diagram A).

In older mobile homes that are not well insulated, extreme heat or cold can be transferred from the outside to the inside through poorly insulated walls and roof. This may cause a thermal barrier, which can prevent smoke from reaching an alarm mounted on the ceiling. In such mobile homes install your Smoke/CO Alarm on an inside wall with the top edge of the alarm at a minimum of 4" (10cm) and a maximum of 12" (30.5cm) below the ceiling. (See Diagram A). If you are not sure about the insulation in your mobile home, or if you notice that the outer walls and ceiling are either hot or cold, install your alarm on an inside wall only!

Installation

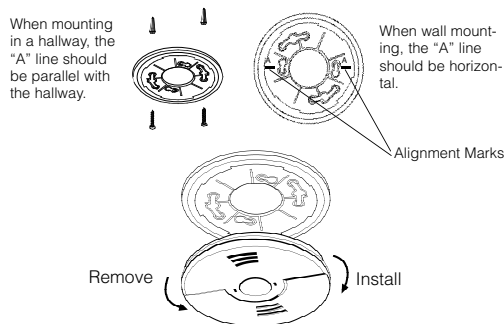
Locations To Avoid

WARNING: Do not install in garages, kitchens, furnace rooms or bathrooms! Install at least 5' (1.5 m) away from any fuel burning appliance.

Do not install within 3' (.9m) of the following: The door to a kitchen, or a bathroom that contains a tub or shower, forced air supply ducts used for heating or cooling, ceiling or whole house ventilating fans, or other high air flow areas. Avoid excessively dusty, dirty or greasy areas. Dust, grease or household chemicals can contaminate the alarm's sensors, causing it to not operate properly.

Place the alarm where drapes or other objects will not block the sensors. Smoke and CO must be able to reach the sensors to accurately detect these conditions. Do not install in peaks of vaulted ceilings, "A" frame ceilings or gabled roofs. Keep out of damp and humid areas. Do not place near a diaper pail.

Smoke alarms are not to be used with detector guards unless the combination (alarm and guard) has been evaluated and found suitable for that purpose.



Install at least 12" (30.5 cm) away from fluorescent lights as electronic noise may cause nuisance alarms. Do not place in direct sunlight and keep out of insect infested areas. Extreme temperatures will effect the sensitivity of the Smoke/CO Alarm. Do not install in areas where the temperature is colder than 40°F (4.4°C) or hotter than 100°F (37.8°C), such as garages and unfinished attics. Do not install in areas where the relative humidity (RH) is greater than 85%. Place away from doors and windows that open to the outside.

Mounting

CAUTION: Your Smoke/CO Alarm is sealed and the cover is NOT removable!

- To help identify the date to replace the unit, a label has been affixed to the side of the alarm. Write the "Replace by" date (7 years from power up) in permanent marker on the label. See "Alarm Replacement" section for additional details.
- The mounting plate must be removed from the back of the alarm to install. To detach, twist the mounting plate and the alarm in opposite directions. Hold the mounting plate against the selected installation location (wall or ceiling) and mark the center of the holes with a pencil.
- To ensure aesthetic alignment of the alarm with the hallway, or wall, the "A" line on the mounting plate should be parallel with the hallway when ceiling mounting, or horizontal when wall mounting. Drill a hole through the pencil marks and use the enclosed screws and anchors to secure. Use 3/16" drill for anchor holes. Align the Smoke/CO Alarm with the mounting plate and rotate clockwise (right) until the unit is aligned. Screw and anchor accessories are supplied.

Testing

The Test/Reset button has four purposes. It tests the unit's electronics, resets the alarm, activates the HUSH® feature and activates the Peak Level memory (See page 16-17).

CAUTION: Due to the loudness (85 decibels) of the alarm, always stand an arms length away from the unit when testing.

- **To test:** Press and release the Test/Reset button and 4 seconds of alarm will sound, followed by the message "*Fire! Feu!*", then another four short beeps and the message "*Carbon Monoxide! Monoxyde de carbone!*", followed by 4 additional short beeps.
- **Reset:** If the CO alarm pattern is sounding, pressing the Test/Reset button will silence the alarm. If the CO condition that caused the alert continues, the alarm will reactivate. Reactivation times depend on the amount of smoke or CO present. **See page 18.**
- **Peak Level Memory:** If 8 chirps are made when pushing the Test/Reset button, the unit has detected a CO level of 100 PPM or greater.
- **HUSH®:** If the smoke/CO Alarm is sounding a smoke alarm, pressing the test/reset button will temporarily silence the alarm. If the smoke level continues to build, the alarm will reactivate. **See Page 16.**

The unit needs to be tested weekly! If at anytime it does not perform as described, verify the three batteries are installed correctly and that they don't need replacing. Clean dust and other buildup off the unit. If it still doesn't operate properly call the Consumer Hotline at 1-800-880-6788.

Operation

Determining what type of alarm has sounded is easy with the Kidde Combination Smoke/CO Alarm. The voice message warning system will inform you of the type of situation occurring. Refer to the Features section for a detailed description of each alarm pattern.

HUSH® Control Feature

The HUSH® feature has the capability of temporarily desensitizing the smoke alarm circuit for approximately 10 minutes. This feature is to be used only when a known alarm condition, such as smoke from cooking, activates the alarm. You can put your Smoke/CO Alarm in HUSH® mode by pushing the test/reset button. If the smoke is not too dense, the alarm will silence immediately and the green LED will flash every 2 seconds for approximately 10 minutes. This indicates that the smoke alarm is in a temporarily desensitized condition. The unit will automatically reset after approximately 10 minutes. When the unit returns to normal operation after being in HUSH® mode the alarm will sound if smoke is still present. The HUSH® feature can be used repeatedly until the air has been cleared of the condition causing the alarm. While the unit is in HUSH® mode, pushing the test/reset button on the alarm will also end the HUSH® period.

NOTE: Dense smoke will override the HUSH® control feature and sound a continuous alarm.

CAUTION: Before using the alarm HUSH® feature, identify the source of the smoke and be certain a safe condition exists.

Operation

Peak Level Memory

If the CO sensor has detected a CO level of 100 PPM or higher since last reset, it will be recorded by the Peak Level Memory function. To access the Peak Level Memory press the test/reset button. If a reading of 100 PPM or higher has been recorded the unit will chirp 8 times. If you've been away from home this feature allows you to check if there was a CO reading of 100, or higher, during your absence. Pushing the test/reset button resets the memory. It's also reset when batteries are removed.

Alarm Removal

If the tamper resist feature has been activated, refer to tamper resist feature description on page 6 for removal instructions. Remove the alarm from the mounting plate by rotating the alarm in the direction of the "OFF" arrow on the cover.

Alarm Replacement

Seven years after initial power-up, this unit will "chirp" every 30 seconds to indicate that it is time to replace the alarm. A label has been provided on the side of the alarm that has "Replace by" printed on it. Write the replace by date on the label. The date written on the label should be after seven (7) years of cumulative power.

REPLACE IMMEDIATELY! IT WILL NOT DETECT CO IN THIS CONDITION.

If any form of battery failure is detected the red LED light will flash and the unit will “chirp” one time, followed by the warning message “*Low Battery! Pile Faible!*” This cycle will occur once every minute for the first hour. After the first hour, the red LED light will continue flashing accompanied by the chirp only sound every 60 seconds. The voice message “*Low Battery! Pile Faible!*” will sound once every fifteen minutes during the chirp only cycle, and will continue for at least seven days.

If the red LED light flashes along with a chirp every 30 seconds, and is not followed by the voice message “*Low Battery! Pile Faible!*” as described above, your unit has malfunctioned. Call our toll free Consumer Hotline at 1-800-880-6788 for instructions on how to return the unit.

Refer to page 9 for information on installing the batteries. Replace batteries with one of the following approved brands:

Duracell MN1500 or MX1500
Energizer E91

These batteries can be purchased at your local retailer.

WARNING! Use only the batteries specified. Use of different batteries may have a detrimental effect on the Smoke/CO alarm. A good safety measure is to replace the batteries twice a year, or at the same time you change your clocks for daylight saving time.

Constant exposure to high or low humidity, or temperature may reduce battery life.

To keep your Smoke/CO Alarm in good working order, please follow these simple steps:

- Verify the unit's alarm, LED lights and battery operation by pushing the Test/Reset button once a week.
- Remove the unit from mounting plate and vacuum the alarm cover and vents with a soft brush attachment once a month to remove dust and dirt. **REINSTALL IMMEDIATELY AFTER CLEANING AND THEN TEST USING THE TEST/RESET BUTTON.**
- Never use detergents or other solvents to clean the unit.
- Avoid spraying air fresheners, hair spray, or other aerosols near the Smoke/CO Alarm.

Do not paint the unit. Paint will seal the vents and interfere with the sensor's ability to detect smoke and CO. Never attempt to disassemble the unit or clean inside. This action will void your warranty.

Move the Smoke/CO Alarm to another location prior to performing any of the following:

- Staining or stripping wood floors or furniture
- Painting
- Wall papering
- Using adhesives

Storing the unit in a plastic bag during any of the above projects will protect the sensors from damage. Do not place near a diaper pail.

WARNING! Reinstall the Smoke/CO Alarm as soon as possible to assure continuous protection. When household cleaning supplies or similar contaminants are used, the area must be well ventilated. The following substances can affect the CO sensor and may cause false readings and damage to the sensor: Methane, propane, iso-butane, iso-propanol, ethyl acetate, hydrogen sulfide, sulfide dioxides, alcohol based products, paints, thinner, solvents, adhesives, hair spray, after shave, perfume, and some cleaning agents.

General CO Information

Carbon monoxide (CO) is a colourless, odorless, and tasteless poison gas that can be fatal when inhaled. CO inhibits the blood's capacity to carry oxygen.

Symptoms of CO Poisoning

The following symptoms are related to carbon monoxide poisoning and should be discussed with ALL members of the household:

1. **Mild Exposure:** Headaches, running nose, sore eyes, often described as "flu"-like symptoms.
2. **Medium Exposure:** Dizziness, drowsiness, vomiting.
3. **Extreme Exposure:** Unconsciousness, brain damage, death.

The above levels of exposure relate to healthy adults. Levels differ for those at high risk. Exposure to high levels of carbon monoxide can be fatal or cause permanent damage and disabilities. Many cases of reported carbon monoxide poisoning indicate that while victims are aware they are not well, they become so disoriented they are unable to save themselves by either exiting the building, or calling for assistance. Also, young children and household pets may be the first effected. Familiarization with the effects of each level is important.

Initial carbon monoxide poisoning symptoms are similar to the flu with no fever and can include dizziness, severe headaches, nausea, vomiting and disorientation. Everyone is susceptible but experts agree that unborn babies, pregnant women, senior citizens and people with heart or respiratory problems are especially vulnerable. If symptoms of carbon monoxide poisoning are experienced seek medical attention immediately. CO poisoning can be determined by a carboxyhemoglobin test.

The CO sensor meets the alarm response time requirements as follows:

At 70 PPM, the unit must alarm within 60-240 minutes.
At 150 PPM, the unit must alarm within 10-50 minutes.
At 400 PPM, the unit must alarm within 4-15 minutes.

NOTE:This carbon monoxide alarm is designed to detect carbon monoxide gas from ANY source of combustion. It is NOT designed to detect any other gas.

Fire departments, most utility companies and HVAC contractors will perform CO inspections, some may charge for this service. It's advisable to inquire about any applicable fees prior to having the service performed. Kiddle will not pay for, or reimburse, the owner or user of this product, for any repair or dispatch calls related to the alarm sounding.

Possible Sources of CO

CO can be produced when burning any fossil fuel, such as gasoline, propane, natural gas, oil and wood. It can be produced by any fuel-burning appliance that is malfunctioning, improperly installed, or not ventilated correctly, such as:

- Furnaces, gas ranges/stoves, gas clothes dryers, water heaters, portable fuel burning space heaters, fireplaces, wood-burning stoves and certain swimming pool heaters.
- Blocked chimneys or flues, back drafting and changes in air pressure, corroded or disconnected vent pipes, loose or cracked furnace exchangers.
- Vehicles and other combustion engines running in an open or closed garage, attached or near a home.
- Charcoal/gas grill or hibachis in an enclosed area.

Carbon Monoxide Safety

The following conditions can result in transient CO situations: Excessive spillage or reverse venting of fuel-burning appliances caused by outdoor ambient conditions such as:

- Wind direction and/or velocity, including high gusts of wind, heavy air in the vent pipes (cold/humid air with extended periods between cycles).
- Negative pressure resulting from the use of exhaust fans.
- Simultaneous operation of several fuel-burning appliances competing for limited internal air.
- Vent pipe connections vibrating loose from clothes dryers, furnaces, or water heaters.
- Obstructions in, or unconventional, vent pipe designs which can amplify the above situations.
- Extended operation of unvented fuel-burning devices (range, oven, fireplace, etc.).
- Temperature inversions which can trap exhaust gasses near the ground.

Every year, have the heating system, vents, chimney and flue inspected and cleaned by a qualified technician. Always install appliances according to manufacturer's instructions and adhere to local building codes. Most appliances should be installed by professionals and inspected after installation. Regularly examine vents and chimneys for improper connections, visible rust, or stains, and check for cracks in furnace heat exchangers. Verify the colour of flame on pilot lights and burners is blue. A yellow or orange flame is a sign that the fuel is not burning completely. Teach all household members what the alarm sounds like and how to respond in an emergency.

Carbon Monoxide Safety

Carbon Monoxide Alarm Procedure



WARNING: Actuation of the CO Alarm indicates the presence of Carbon Monoxide (CO) which can KILL YOU.

If alarm signal sounds 4 quick beeps, 5 seconds off:

- 1) Immediately move to fresh air - outdoors. Check that all persons are accounted for. Do not re-enter the premises until emergency services responders have arrived, the premises have been aired out, and your alarm remains in its normal operating condition.
- 2) Call your emergency local service (fire department or 911).

PHONE NUMBER

Never restart the source of a CO problem until it has been corrected.

NEVER IGNORE THE SOUND OF THE ALARM!

Escape Plan

Prepare and practice a home escape plan twice a year, including drills at night. Know two ways out of every room (door & window) and identify a meeting place outside the home where everyone will gather once they have exited the residence. When two people have reached the meeting place, one should leave to call 911 while the second person stays to account for additional family members. **Establish a rule that once you're out, you never re-enter under any circumstance!**

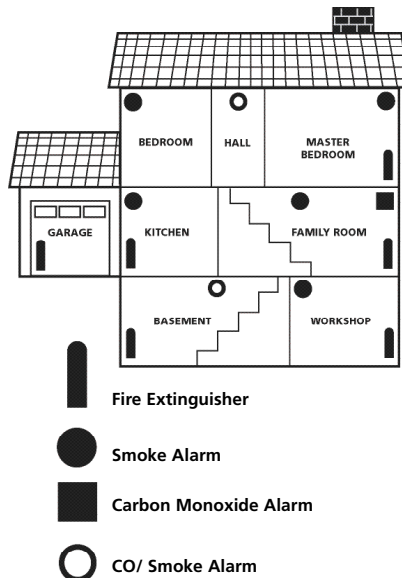
Smoke Alarm Procedure

Smoke alarms are designed to minimize false alarms. Cigarette smoke will not normally set off the alarm, unless it's blown directly into the alarm. Combustion particles from spills or broiling may set off the alarm if located too close to the cooking area. If the alarm sounds, check for fires first. If a fire is discovered follow these steps. Become thoroughly familiar with these steps, and review them with all your family members.

- Leave immediately using one of your planned escape routes (see above).
- Before opening inside doors look for smoke seeping through the edges. Feel with the back of your hand - if the door is hot use your second exit. If you feel it's safe, open the door very slowly and be prepared to close it immediately if smoke and heat rush in.
- If the escape route requires going through smoke, crawl low under the smoke where the air is clearer.
- Go to your predetermined meeting place. When two people have arrived one should leave to call 911 from a neighbour's home, and the other should stay to perform a head count.
- Do not reenter under any circumstance until fire officials give the go ahead.

Fire Prevention

Never smoke in bed, or leave cooking food unattended. Teach children never to play with matches or lighters! Train everyone in the home to recognize the alarm pattern, voice message warnings and to leave the home using an escape plan when it's heard. Know how to do Stop, Drop and Roll if clothes catch on fire, and how to crawl low under smoke. Install and maintain fire extinguishers on every level of the home and in the kitchen, basement and garage. Know how to use a fire extinguisher prior to an emergency. Second level and higher occupied rooms with windows, should have an escape ladder.



Additional Recommendations

Smoke alarms should be installed outside of each separate sleeping area in the immediate vicinity of the bedrooms and on each additional story of the family living unit including basements and excluding crawl spaces and unfinished attics. In new construction, a smoke alarm should be installed in each sleeping room. Check with local officials for specific regulations concerning your situation.

The required number of smoke alarms might not provide reliable early warning protection for those areas separated by a door from the areas protected by the required smoke alarms. For this reason, it is recommended that the householder consider the use of additional smoke alarms for those areas for increased protection. Additional areas include the basement, bedrooms, dining room, furnace room, utility room, and hallways not protected by the required smoke alarms. The installation of smoke alarms in kitchens, attics (finished or unfinished), or garages is not normally recommended, as these locations occasionally experience conditions that can result in improper operation.

NRC

Ionization type smoke alarms use a very small amount of a radioactive element in the sensing chamber to enable detection of visible and invisible combustion products. The radioactive element is safely contained in the chamber and requires no adjustments or maintenance. This smoke alarm meets or exceeds all government standards. It is manufactured and distributed under license from the U.S. Nuclear Regulatory Commission.

CPSC

The Consumer Product Safety Commission (CPSC) recommends the use of at least one CO Alarm per household, located near the sleeping area.

5 Year Limited Warranty

Kidde warrants that the enclosed alarm (but not the battery/ies) will be free from defects in material and workmanship or design under normal use and service for a period of five years from the date of purchase. The obligation of Kidde under this warranty is limited to repairing or replacing the alarm or any part which we find to be defective in material, workmanship or design, free of charge, upon sending the alarm with proof of date of purchase, postage and return postage prepaid, to: Kidde, Customer Service Department, 130 Esna Park Drive, Markham ON L3R 1E3.

This warranty shall not apply to the alarm if it has been damaged, modified, abused or altered after the date of purchase or if it fails to operate due to improper maintenance or inadequate A.C. or D.C. power. Any implied warranties arising out of this sale, including but not limited to the implied warranties of description, merchantability and fitness for a particular purpose, are limited in duration to the above warranty period. In no event shall the Manufacturer be liable for loss of use of this product or for any indirect, special, incidental or consequential damages, or costs, or expenses incurred by the consumer or any other user of this product, whether due to a breach of contract, negligence, strict liability in tort or otherwise. The Manufacturer shall have no liability for any personal injury, property damage or any special, incidental, contingent or consequential damage of any kind resulting from gas leakage, fire or explosion.

Since some provinces do not allow limitations of the duration of an implied warranty or do not allow the exclusion or limitation of incidental or consequential damages, the above limitations or exclusions may not apply to you. While this warranty gives you specific legal rights, you may also have other rights which vary from province to province.

Also, Kidde makes no warranty, express or implied, written or oral, including that of merchantability or fitness for any particular purpose, with respect to the batteries.

The above warranty may not be altered except in writing signed by both parties hereto.

This Kidde Combination Smoke & CO Alarm is not a substitute for property, fire, disability, life or other insurance of any kind. Appropriate insurance coverage is your responsibility. Consult your insurance agent.

Removal of the front cover will void the warranty.

NOTE: This alarm is not intended to alert hearing impaired individuals.

During the specified warranty period Kidde will repair or replace, at its discretion any defective Kidde Combination Smoke & CO Alarms that are returned in a postage paid package to the following address:

Kidde, Customer Service Department, 130 Esna Park Drive, Markham ON L3R 1E3. Please include your name, address and phone number along with a brief description of what is wrong with the unit. For further assistance please call our toll free Consumer Hotline at 1-800-880-6788. Damage from neglect, abuse or failure to adhere to any of the enclosed instructions will result in termination of the warranty, and the unit will not be replaced or repaired.